



**CAMBRIDGE
REGIONAL COLLEGE**
GREAT CAREERS START HERE

Funded by:

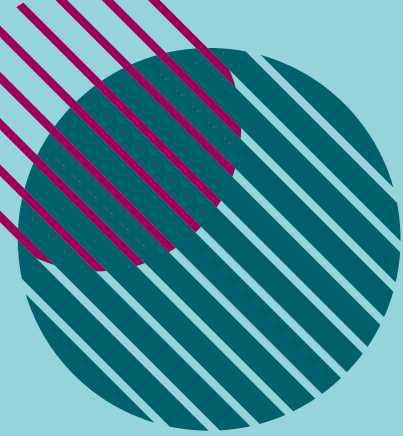


**CAMBRIDGESHIRE
& PETERBOROUGH**
COMBINED AUTHORITY

**WELCOME TO CAMBRIDGE
REGIONAL COLLEGE**

A QUICK GUIDE TO THE COLLEGE

CAMRE.AC.UK



WELCOME TO CAMBRIDGE REGIONAL COLLEGE

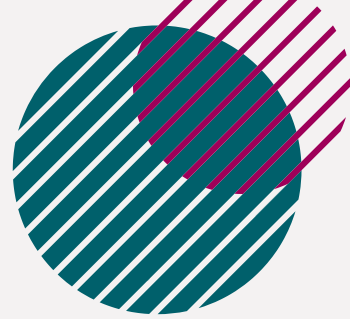
We are here to help you.

Cambridge Regional College can support you and your family, as you settle in the UK with:

- learning English
- skills for employment
- training and development courses.

We have easy to reach sites in Cambridge and Huntingdon and provide support for people aged 16 and over.

HOW WE CAN SUPPORT YOU



ENGLISH AS A SECOND OR OTHER LANGUAGE (ESOL)

Classes to learn English as another/second language – many levels available.

- Get help to speak, listen, read and write in English.
- Meet others and make friends.
- Grow in confidence with your English skills.

We will need to find out what level of English you have before you start. You will take a simple test.

English (ESOL) Summer Programme

Dates: 27/06/22 - 12/08/22
Days: Monday to Thursday
Times: 2pm – 4pm
Where: Cambridge Campus.

English (ESOL) Programme (Aged 19+)

Full time	Part time
Dates: 5/09/22 - 22/06/23	Dates: 5/09/22 - 22/06/23
Days: Monday to Thursday	Days: Tuesday or Thursday
Times: 9:30am - 1pm	Times: 6pm-9pm
Where: Cambridge or Huntingdon	Where: Cambridge or Huntingdon

English (ESOL) Programme (Aged 16-18)

Start Date: 5/09/22 - 22/06/23
Days: Monday to Thursday
Times: 9:30am - 3:30pm
Where: Cambridge Campus or Huntingdon Campus

ESOL Courses are free to you if you are in the UK under the Ukraine Family Scheme or Ukraine Sponsorship Scheme (Homes for Ukraine).

How to book

We will need to find out what level of English you have before you start. You will take a simple test. The test is available every week.

Contact Patricia Kurl to book your test:



01223 226 317



pkurl@camre.ac.uk

Welcome and Guidance Sessions

Come to our 'Welcome and Guidance' sessions for:

- orientation
- welcome
- information, advice and guidance
- initial assessment for courses starting on 5th September.

Upcoming dates, at Cambridge Campus, International Centre:

- Tue 2nd August 2-4pm
- Wed 10th August 2-4pm
- Mon 22nd August 10am-12pm
- Tue 23rd August 10am-12pm
- Wed 24th August 2-4pm
- Thu 25th August 2-4pm

Next steps

After your test, we will contact you with details on when your classes start.

Depending on availability, this may be for our summer programme, or our new courses starting in September.



COME AND VISIT US

We're here to help you.

You can come and visit us for help at:

Open Days

Join our Open Days, you can book or just turn up:

Cambridge Campus
Wednesday, 15th
June, 4:30-7pm

Kings Hedges Road
Cambridge
CB4 2QT

Huntingdon Campus Open Day &
Community Fun Day
Saturday, 11th June, 10:30am-1pm

California Road
Huntingdon
PE29 1BL

www.camre.ac.uk/open-days

Lunch and Learn Webinar - Using language to land a job

28th June, 12pm-1pm

This webinar looks at using language to land a job and covers:

- What are transferable skills? What does that mean?
- How can I use transferable skills to assist me with progressing into employment/changing careers or progressing in my career.
- Online safety and how to keep your information safe
- Further support Futures can offer you moving forward

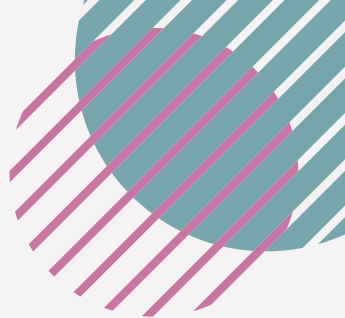
You can join on your phone or a tablet or computer. Book your place here: www.camre.ac.uk/upcoming-events/lunch-learn-webinars-using-language-to-land-the-job/

COURSES & TRAINING

You can access all the courses offered by the college as all UK residents. Many are fully funded and can help you:

- Develop skills and knowledge
- Get into employment
- Build your confidence
- Retrain
- Gain qualifications

For more information visit www.camre.ac.uk/adult



SUPPORT SERVICES AT COLLEGE

The Student Support Services team is located in The Hub (at both Cambridge and Huntingdon campuses).

You can get help and advice with:

Careers Information, Advice and Guidance

You can get advice on careers and university courses including:

- 1:1 appointment with a fully-qualified careers adviser
- Careers information and advice on The Hub Online
- Job searching which is tailored to your career goals
- Help with creating and updating your CV
- Help with choosing what to do after your programme finishes
- Support with writing university applications and personal statements
- Online course information via Live Chat on the CRC website

You can book an appointment by visiting the Hub, or telephone 01223 226315 or email enquiries@camre.ac.uk

Welfare and Wellbeing

Students can talk to someone confidentially, the team can offer support and advice on a number of areas including:

- Personal and emotional concerns
- Concerns about coming to College
- Safeguarding yourself and others whilst at CRC
- Mental Health
- Healthy Relationships
- Being a young carer or young parent.

Visit them at the Hub or email wellbeing@camre.ac.uk

Financial Support

Money matters shouldn't stop you from coming to College which is why our Bursary and Finance Team is available to advise you on sources of financial help including any bursaries or support funds that may be available to you.

Visit them at the Hub or email financialsupport@camre.ac.uk

Safeguarding

All Cambridge Regional College staff are responsible for safeguarding in the College, and we are trained to act to keep everyone safe. If you have any concerns you can email safeguarding@camre.ac.uk or visit the Hub and ask for a Safeguarding Officer.

For more info: visit www.camre.ac.uk/student-support



GETTING TO COLLEGE

There are lots of ways to get to both of our campuses, in Cambridge and Huntingdon, whether you're travelling by foot, bike, bus, car or train; we're within reach across the region.



College Bus

We run college bus routes in around Cambridgeshire to each of the campuses. For bus routes and timetables see <https://www.camre.ac.uk/student-support/travelling-to-college/>



Guided Bus & Bus Services

There are guided busway stops close to both campuses and is run by Cambridgeshire Guided Busway. You can find out more information, including routes and timetables here <https://www.thebusway.info/>



Train

The nearest train station to Cambridge campus is Cambridge North Station which is about 15-20-minute walk away. The nearest train station to Huntingdon campus is Huntingdon Station and is about 20-25-minute walk away.

The college runs a free shuttle bus to and from Cambridge North Station to Cambridge Campus and to and from Huntingdon Station and Huntingdon Campus.

More information is available here <https://www.camre.ac.uk/student-support/travelling-to-college/>



Car

There is parking for students at both the Cambridge and Huntingdon campuses. There is a charge of £2 per visit at the Cambridge Campus. Huntingdon campus is free of charge.

Cambridge Campus

Kings Hedges Road,
Cambridge
CB4 2QT

Huntingdon Campus

California Road,
Huntingdon
PE29 1BL

We're here to help you

Visit us at Cambridge Campus

Website: camre.ac.uk/refugeesupport

Email: international.enquiry@staff.camre.ac.uk

Phone: 01223 226315

Cambridge Campus

Kings Hedges Road,
Cambridge
CB4 2QT

Huntingdon Campus

California Road,
Huntingdon
PE29 1BL

